

# ABOUT APAT

Advanced Process Automation Technologies (APAT) is a provider of products, solutions, and services in intelligent manufacturing and smart infrastructure. Our mission is to support customers in their digital transformation, enhancing efficiency, profitability, and sustainability. APAT's tools and services focus on minimizing resource consumption, improving operational efficiency, and maximizing the quality of clients' products and services.

# BUSINESS MODEL

Our business model have two broad categories:  
1. Technology licensing and technology transfer,  
2. Product and service delivery to end users in cooperation with our reseller network and system integration partners.

# GET IN TOUCH

Address: 3600 Steeles Avenue East, Markham,  
ON L3R 9Z7, CANADA  
Email: info@apatechnologies.com  
Web: www.apatechnologies.com



# OPERATION INTEGRATION PLATFORM(OIP)

APAT's **HPI NxT** enables hyper-convergence of data and events from OT, IOT and IT systems to provide enhanced management for manufacturing and infrastructure processes and assets in the context of an industry 4.0 enterprise. HPI NxT can handle mission critical tasks with Its high availability and fault resilience features while operating from on-premise, private or public clouds installations. With its powerful features, modern technologies, and adherence to standards, **HPI NxT** serves as a key enabler for digital transformation initiatives.

# HPI NxT: The converged OT, IT and IoT Platform



# HPI NxT POWERS

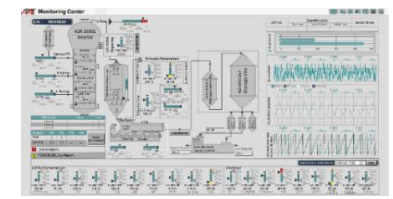
## Smart Buildings

Intelligent asset management, demand side energy management, comfort control, net zero energy transformation.



## Industry 4.0 Manufacturing

Plantwide assets, resources and process and optimization, proactive analytics, Fault Detection and recovery



## Sustainable Infrastructure

Assets and energy management, citizen awareness, coordination of interdepartmental processes



**HPI: Supervisory Control System**

As a powerful HMI/SCADA platform, HPI provides an intuitive visual design tool and a scalable high-availability distributed runtime to meet the requirements of mission-critical supervisory control systems. Demonstrated in large installations, HPI is well prepared for projects with challenging requirements.

**DXS: Decentralized Process Control System**

DXS is a proven Distributed Control System, consisting of a powerful and robust set of processor, networking and I/O components. It comes with an integrated programming and configuration tool containing a comprehensive library of Function Blocks. DXS incorporates HPI as its supervisory control sub system and is designed to provide real-time and high availability automation for a broad range of industrial and infrastructure processes.

**And a spectrum of complementary products:**

APAT's list of tools and products include a high-performance plant historian, MS Excel®-based reporting component, a powerful mashup and dashboard builder, an OPC UA server supporting various industrial communication protocols, protocol conversion gateways, special purpose controllers, cyber-security components and more.



**Hyper-Converged**

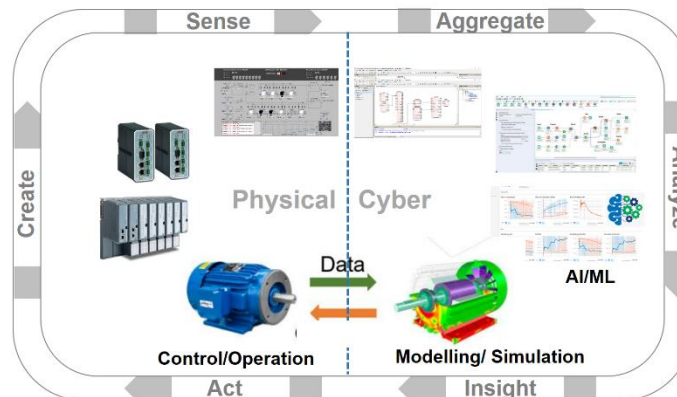
**HPI NxT** enables optimal decision-making in critical situations by offering real-time insights into processes, assets, materials, and personnel. It supports collaborative problem-solving, positioning itself as a crucial tool for the digital transformation of enterprises toward Industry 4.0 and beyond.

**Closed-Loop AI and Machine Learning**

**HPI NxT** utilizes AI/ML to model, predict, and offer solutions for improving manufacturing or infrastructure processes. It supports agile integration of ML/AI models and features the Operations Copilot for timely responses to critical situations, especially in rare events.

**Integrated Digital Twin**

Digital Twins, evolving as a key industry 4.0 enabler, aid in improving industrial processes and assets. HPI NxT equips users with the necessary tools for leveraging Digital Twin technology in diagnosis, prognosis, and optimization across diverse practical scenarios.



**HPI NxT for Integrated Operations Management**

Based on the innovative and powerful features of APAT's HPI NxT Platform, OT, IT and IoT systems and services can operate collaboratively, fulfilling the ever-increasing need for cross-functional and cross-departmental process automation and optimization.

Specifically, **HPI NxT** provides:

- Supervisory and process control capabilities through the next generation of the APAT automation platform including a modern no or low-code design environment.
- Easy access to IT and enterprise level information using powerful REST service providers and Relational Database connectors.
- On demand visibility and control of asset for managing asset functions, readiness, and utilization through integration with IoT platforms using standard protocols.
- Digital Twins for closed-loop experimenting, prediction and what-if analysis.
- AI support for operations and business optimization through integration with leading Generative AI and Machine Learning tools and platforms.

